

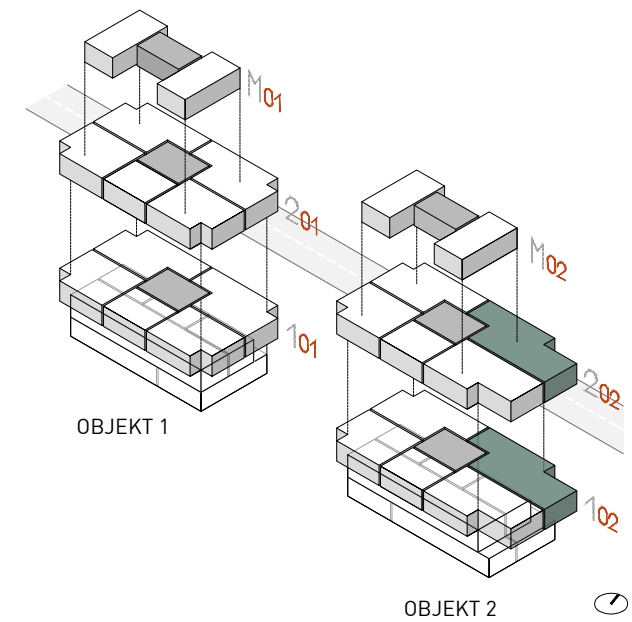
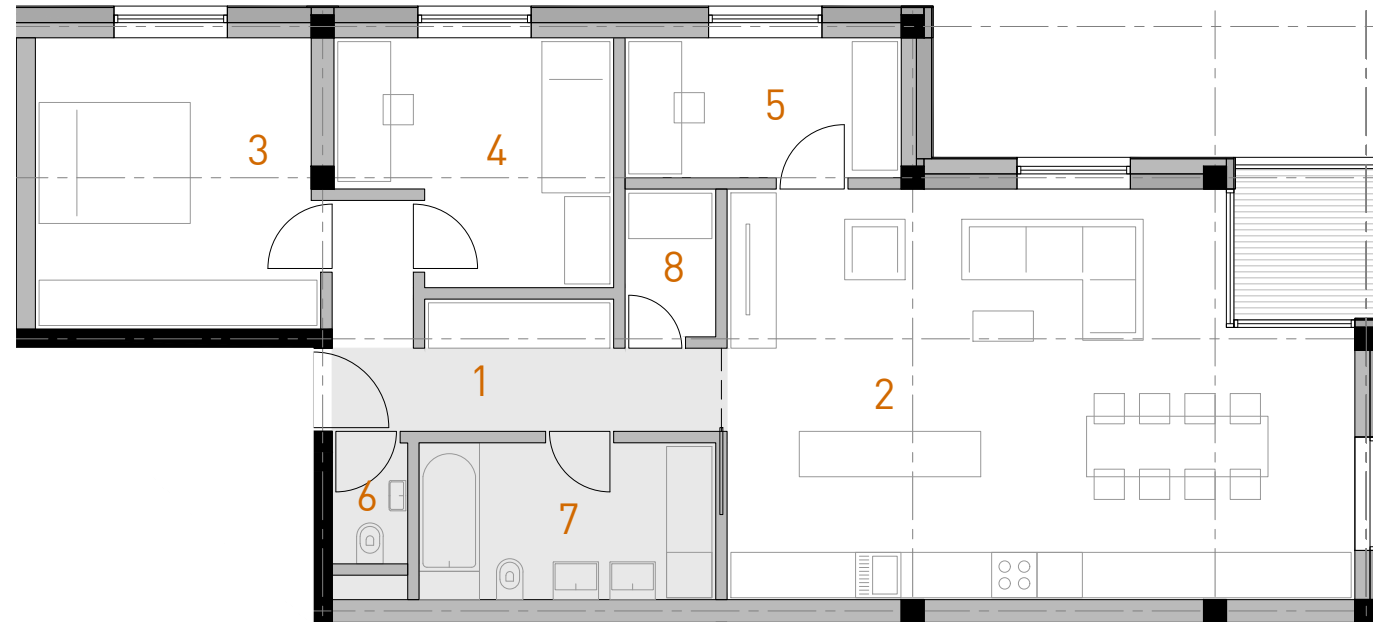
# D

## stanovanje D (3.5 sobno)

1. vhod	9.30 m <sup>2</sup>
2. ds, kuhinja in jedilnica	42.00 m <sup>2</sup>
3. spalnica	14.30 m <sup>2</sup>
4. soba	10.70 m <sup>2</sup>
5. kabinet	6.80 m <sup>2</sup>
6. wc	1.60 m <sup>2</sup>
7. kopalnica	8.10 m <sup>2</sup>
8. shramba	2.30 m <sup>2</sup>

neto notranje kvadrature	95.10 m <sup>2</sup>
balkon/loža	3.70 m <sup>2</sup>

ŠTEVILO STANOVANJ: 2



# E

## stanovanje E (3 sobno)

1. vhod	8.80 m <sup>2</sup>
2. ds, kuhinja in jedilnica	36.60 m <sup>2</sup>
3. spalnica	14.50 m <sup>2</sup>
4. soba	10.70 m <sup>2</sup>
5. kopalnica	3.90 m <sup>2</sup>
6. kopalnica	3.80 m <sup>2</sup>
7. shramba	2.70 m <sup>2</sup>

neto notranje kvadrature	81.00 m <sup>2</sup>
balkon/loža	3.70 m <sup>2</sup>

ŠTEVILO STANOVANJ: 1

