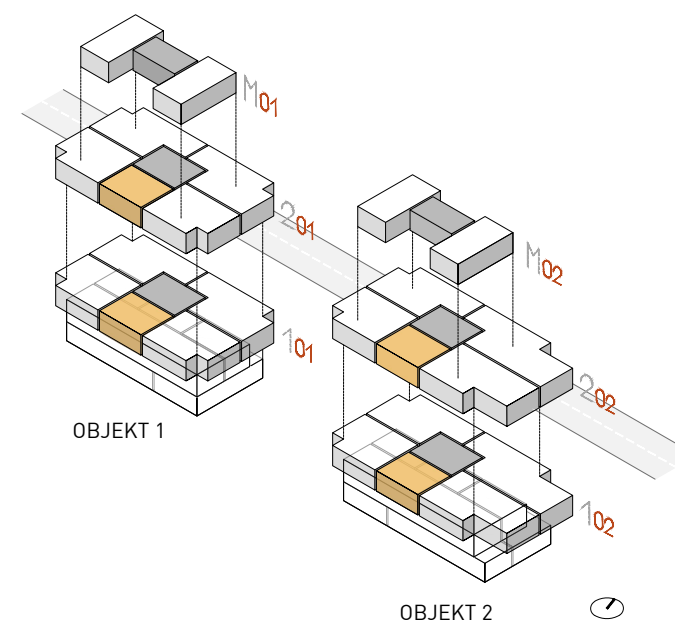
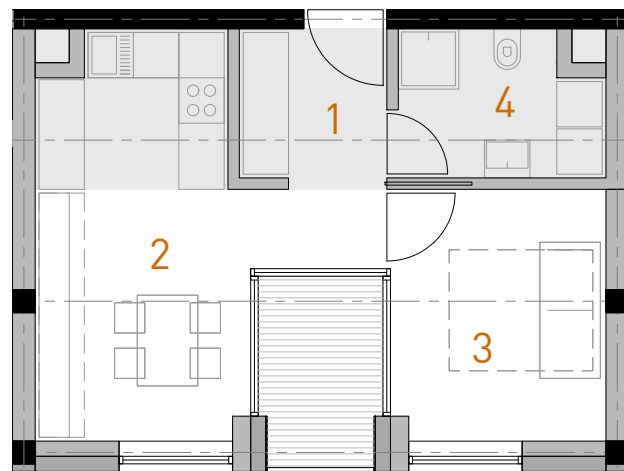


A

stanovanje A (1.5 sobno)

| | |
|-----------------------------|----------------------|
| 1. vhod | 3.60 m ² |
| 2. ds, kuhinja in jedilnica | 16.30 m ² |
| 3. spalnica | 9.40 m ² |
| 4. kopalnica | 5.00 m ² |
| neto notranje kvadrature | 34.30 m ² |
| balkon/loža | 4.00 m ² |

ŠTEVILO STANOVANJ: 4

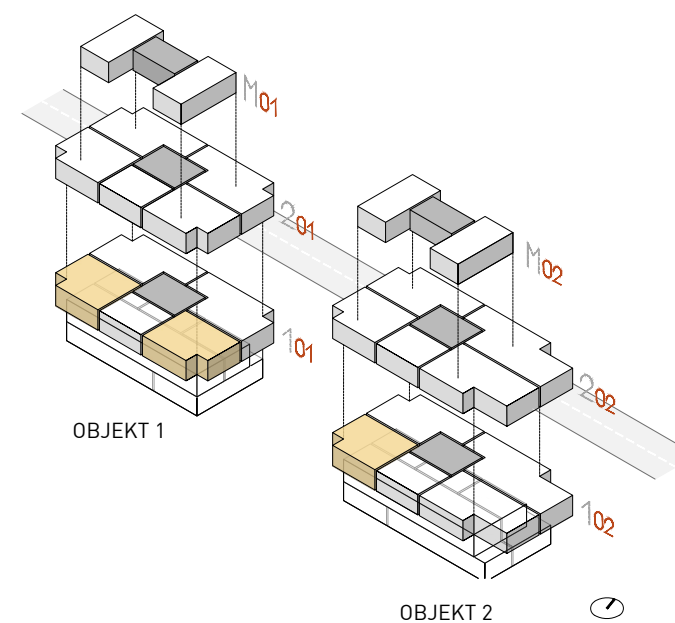
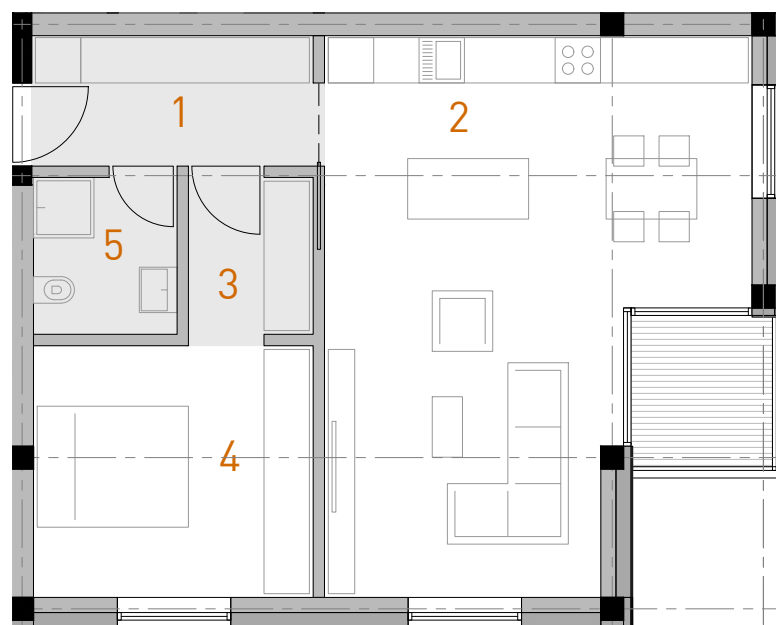


B

stanovanje B (2 sobno)

| | |
|-----------------------------|----------------------|
| 1. vhod | 6.60 m ² |
| 2. ds, kuhinja in jedilnica | 34.90 m ² |
| 3. prehod, garderoba | 3.60 m ² |
| 4. soba | 12.30 m ² |
| 5. kopalnica | 3.90 m ² |
| neto notranje kvadrature | 61.30 m ² |
| balkon/loža | 3.70 m ² |

ŠTEVILO STANOVANJ: 3



C

stanovanje C (3 sobno)

| | |
|-----------------------------|----------------------|
| 1. vhod | 8.00 m ² |
| 2. ds, kuhinja in jedilnica | 34.90 m ² |
| 3. soba | 10.70 m ² |
| 4. spalnica | 14.30 m ² |
| 5. wc | 1.60 m ² |
| 6. kopalnica | 5.30 m ² |
| neto notranje kvadrature | 74.80 m ² |
| balkon/loža | 3.70 m ² |

ŠTEVILO STANOVANJ: 6

